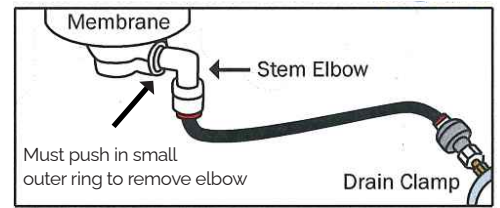


Reverse Osmosis Q-Series

Maintenance see [Diagram 1](#) for labelled cartridge positions

- ① Turn feed water valve off **A**
- ② Turn off storage tank tap **B**
- ③ Release pressure by opening dispensing faucet **C**
- ④ Unscrew and dispose of the Sediment cartridge **1** Reinstall new Sediment cartridge in same position.
- ⑤ Unscrew and dispose of the Carbon Pre-Filter cartridge **2**
- ⑥ Unscrew the Carbon Post-Filter **4** and reinstall it in the position of the Carbon Pre-Filter **2** The Carbon Post Filter has only been used as a polishing filter, hence it can be re-used as the Carbon Pre-Filter.
- ⑦ The Reverse Osmosis membrane needs to be replaced every 3-6 years depending on water quality and usage. To replace RO membrane **3** remove the stem elbow (remaining with black tube inserted) from the base of the existing membrane (see [Diagram 2](#)). Unscrew the membrane cartridge and dispose. To install the new membrane; if necessary remove any dust plugs, then screw it into the head assembly. Re-attach the stem elbow to base of the membrane.
- ⑧ Having removed any dust plugs - install the new Carbon cartridge to the Carbon Post-Filter position **4**
- ⑨ Turn the water inlet valve on **A**
- ⑩ Turn on storage tank tap **B**
- ⑪ Flushing the System before use: open the pure water faucet **C** and run for a few minutes. Dis-colouration and aeration may occur, this is normal and occurs when the non-toxic carbon fines and oxygen are flushed from the new cartridges.



The 4-Stage Filtration Process [Diagram 1](#)

